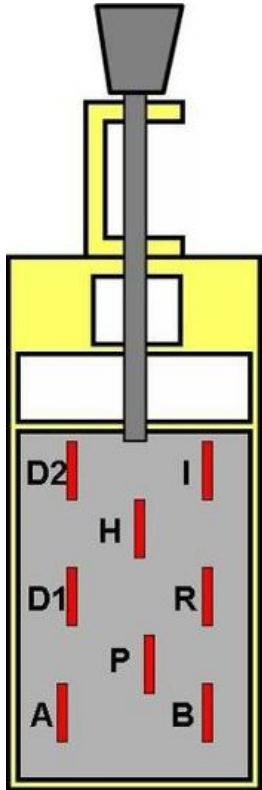
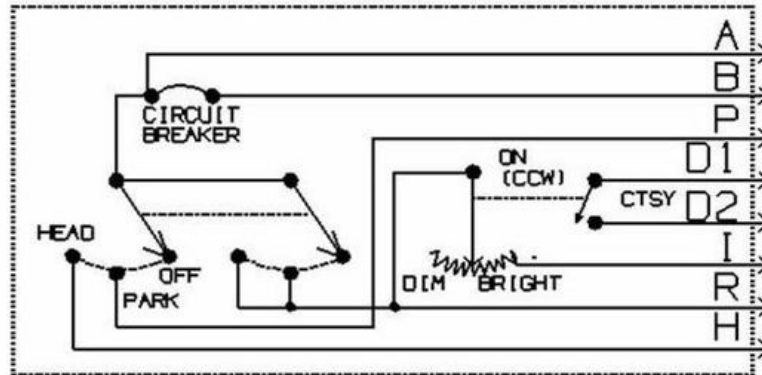


## Mustang Headlight Switch Wiring



B - Battery Feed	Blk/Org
R - Tail Lamps	Blk
I - Dash Ind (thru fuse)	Blu/Red
P - Front Park Lamps	Blk/Yel
H - Headlights	Red/Yel
A - Brake Switch Feed	Grn/Red
D1 - Courtesy Lamp Fuse	Grn/Yel
D2 - Courtesy Lamps	Blk/Blu



- Terminal A
  - MASTERCELL ground
  - Black wire
- Terminal R
  - Parking light input
  - Input 6
  - Blue wire, Black tracer
- Terminal H
  - Headlight input
  - Input 5
  - White wire, Green tracer

\*NOTE: Infinitybox wire Colors & Connector Positions will vary for different kits. See the Configuration Sheet that came with your kit for exact wire colors and locations.

\*\*NOTE: MASTERCELL inputs must be ground switched. Applying 12-volts directly to an input will damage the MASTERCELL and void the warranty.

